

Bardiya National Park Tour

Description

Bardiya National Park is a protected area in Nepal that covers an area of 968.8 square kilometers. It is located in the Terai Lowlands of Nepal and is home to a variety of wildlife, including the Bengal tiger, rhinoceros, and elephant. The national park is also home to a number of rare, endangered and protected species, such as the Gangetic dolphin, the crocodile and the blackbuck.

The national park offers a range of activities for visitors, including safari tours by jeep or elephant, bird watching, sight-seeing and cultural tours of local Tharu villages. Visitors can also enjoy a range of accommodation options, from luxury lodges to more basic outdoor camping facilities.

One of the main attractions of Bardiya National Park is the opportunity to see Bengal tigers in their natural habitat. The national park is home to a thriving population of these magnificent animals, birds and visitors have a good chance of spotting them on a safari tour.

In addition to its abundant wildlife, Bardiya National Park is also home to a diverse range of vegetation, including sal forests, grasslands and wetlands. The park is an important habitat for many species of plants and animals, and is a vital part of the region's ecosystem.

Overall, a tour of Bardiya National Park is a fantastic opportunity to experience the beauty and diversity of Nepal's natural environment, and to see some of the country's most iconic wildlife up close.

Highlights

- Spotting Bengal tigers and other iconic wildlife, such as rhinoceros, elephant and blackbuck, in their natural habitat.
- Going on a safari tour by jeep or elephant to explore the park's flora and fauna, and diverse vegetation, including sal forests, grasslands and wetlands.
- Visiting local Tharu villages and learning and getting a chance to get involved with them about the culture and traditions of this indigenous community.
- Taking part in activities such as fishing, boating, safari on the park's rivers and wetlands.
- Visiting the park's visitor center and learning about the park's history, wildlife and conservation efforts.

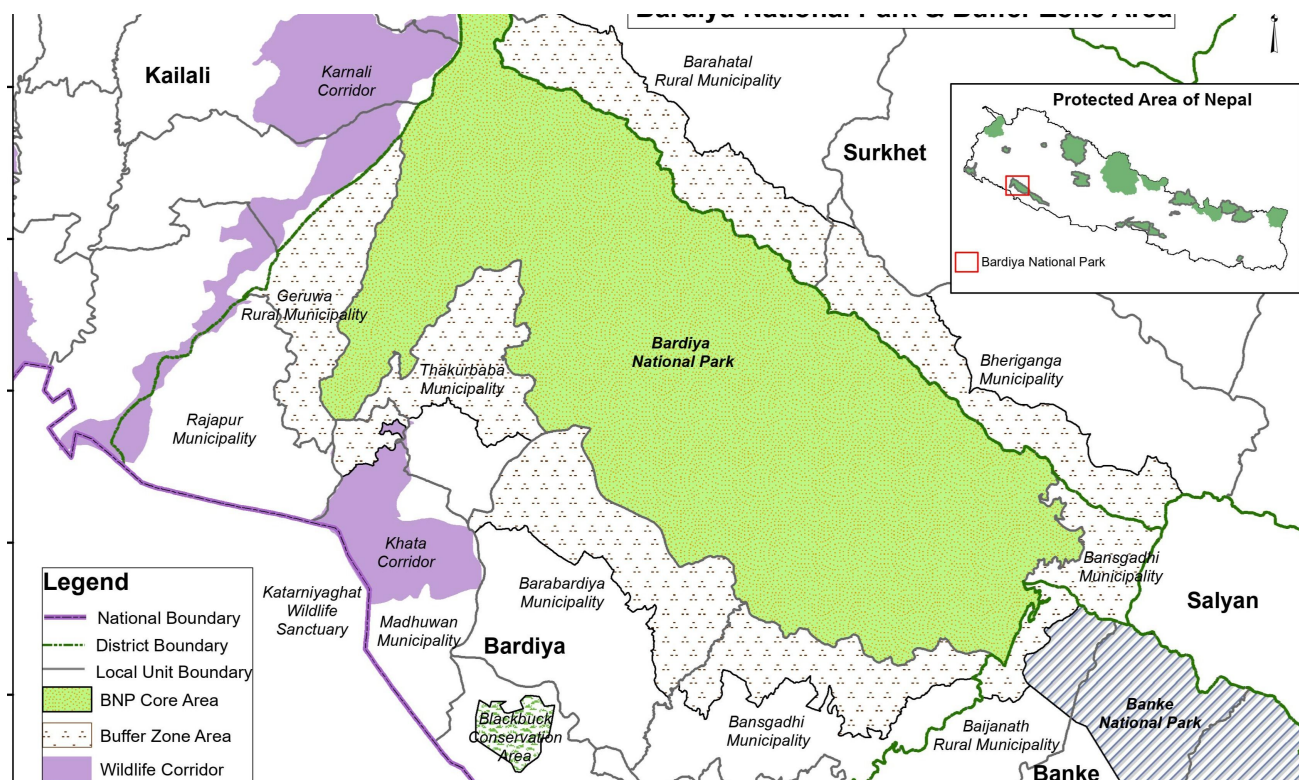
Itinerary

Days	Description	Altitude	Hours
1	Arrival in Kathmandu	1,400 meters	
2	Drive from Kathmandu to Bardia National Park		9-10 hours
3	Full day jungle safari in Bardia National Park		6-7 hours
4	Full day jungle safari in Bardia National Park		6-7 hour
5	Full day jungle safari in Bardia National Park		6-7 hours

Days	Description	Altitude	Hours
6	Drive from Bardia National Park to Kathmandu		9-10 hours
7	Departure from Kathmandu		

Detailed Itinerary

Map



Frequently Asked Questions

Q. How do I get to Bardia National Park?

A. The park is located in the Terai Lowlands of Nepal, and the nearest major city is Kathmandu. There are several ways to get to the park, including by air, bus, or private vehicle. The park can also be accessed by boat from the town of Nepalgunj.

Q. What should I pack for a tour of Bardia National Park?

A. It's important to pack lightweight, comfortable clothing that is suitable for the weather and the type of activities you'll be doing. You'll also want to bring plenty of sunscreen, insect repellent, and a hat to protect yourself from the sun. If you're planning to go on a safari tour, you'll want to bring a good pair of binoculars and a camera.

Q. What kind of accommodation is available at Bardia National Park?

A. The park offers a range of accommodation options, from luxury lodges to more basic camping facilities. You can choose the option that best suits your budget and preferences.

Q. Are there any restrictions on what I can do in the park?

A. There are a few rules and regulations that visitors are expected to follow in Bardia National Park.

For example, it is not allowed to feed the wildlife, damage the vegetation, or disturb the animals in any way. You should also follow the guidance of your guide and any park staff to ensure that you have a safe and enjoyable visit.

Q. Is it safe to visit Bardiya National Park?

A. Bardiya National Park is generally considered a safe destination, but as with any place, it's always a good idea to take basic precautions to protect yourself and your belongings. Follow the guidance of your guide and any park staff, and be aware of your surroundings at all times.

Q. Is a guide required to visit the park?

A. While it is not strictly required to have a guide to visit Bardiya National Park, it is strongly recommended. Guides are knowledgeable about the park's history, wildlife, and conservation efforts, and can help you get the most out of your visit. They can also help you spot wildlife and provide valuable safety information.

Q. What kind of activities can I do in the park?

A. Bardiya National Park offers a range of activities for visitors, including safari tours by jeep or elephant, bird watching, cultural tours of local Tharu villages, and fishing and boating on the park's rivers and wetlands. You can also visit the park's visitor center to learn about the park's history, wildlife, and conservation efforts.

Q. Can I see Bengal tigers in the park?

A. Bardiya National Park is home to a thriving population of Bengal tigers, and visitors have a good chance of spotting these magnificent animals on a safari tour. Keep in mind, however, that spotting wildlife can never be guaranteed, as it depends on a variety of factors such as the weather, the time of day, and the animals' movements.

Q. Are there any additional costs or fees to visit the park?

A. There is a fee to enter Bardiya National Park, which is collected at the park entrance. The cost may vary depending on the length of your visit and the type of activities you plan to do. You may also have to pay additional fees for activities such as safari tours or cultural tours. Be sure to ask your tour operator about any additional costs or fees that may apply.